

UniFi® SECURITY GATEWAY

Enterprise Gateway Router
with Gigabit Ethernet

Models: USG, USG-PRO-4

Advanced Security, Monitoring, and Management

Sophisticated Routing Features

Integrated with UniFi® Controller Software



Affordable Enterprise Network Security

Ubiquiti Networks introduces the UniFi® Security Gateway, which extends the UniFi Enterprise System to encompass routing and security for your network.

The UniFi Security Gateway combines reliable security features with high-performance routing technology in a cost-effective unit.

Two models are available:

- **USG-PRO-4** Rack-mountable form factor with fiber connectivity options and a dual-core, 1 GHz processor for maximum hardware-accelerated performance.
- **USG** Wall-mountable form factor with a dual-core, 500 MHz processor for standard hardware-accelerated performance.

Powerful Firewall Performance

The UniFi Security Gateway offers advanced firewall policies to protect your network and its data.

Convenient VLAN Support

The UniFi Security Gateway can create virtual network segments for security and network traffic management.

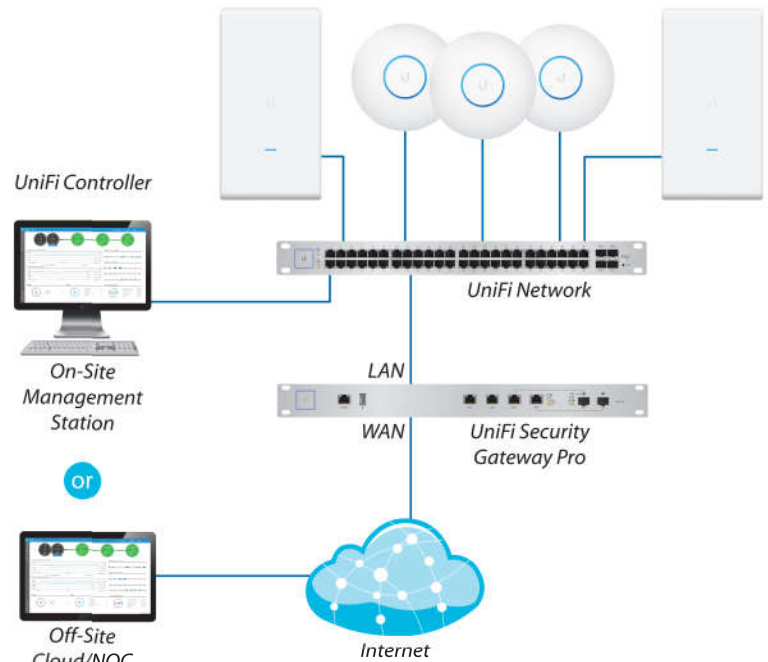
VPN Server for Secure Communications

A site-to-site VPN secures and encrypts private data communications traveling over the Internet.

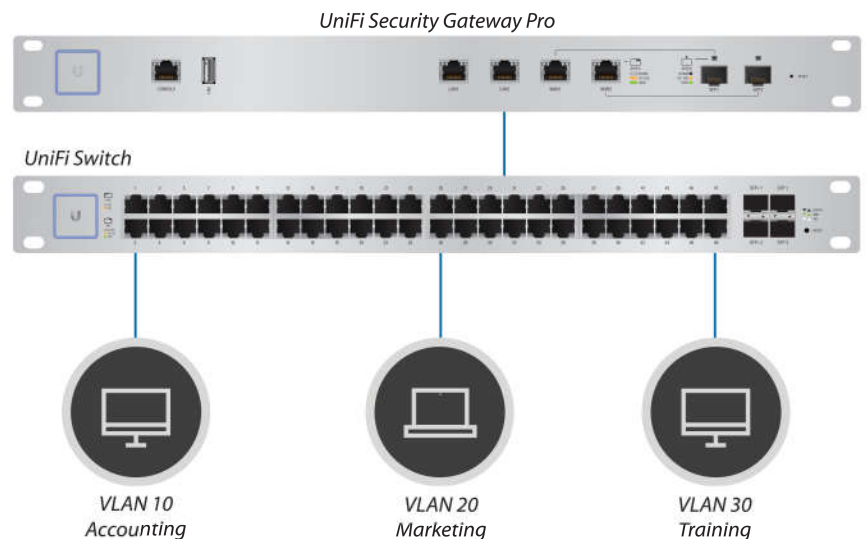
QoS for Enterprise VoIP and Video

Top QoS priority is assigned to voice and video traffic for clear calls and lag-free, video streaming.

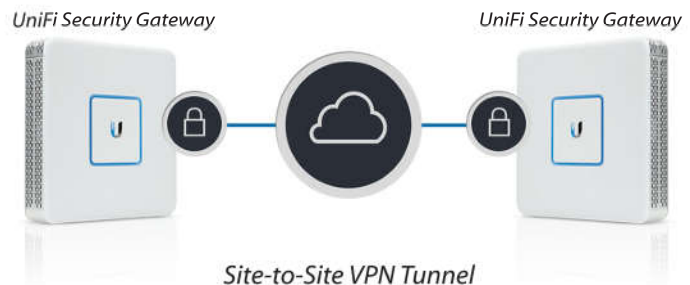
The UniFi Security Gateway is deployed in the same manner as UniFi Access Points for wireless networking. Use the intuitive UniFi Controller to conduct device detection, provisioning, and management.



Example of a UniFi Enterprise System



Network Segmentation with VLAN



Site-to-Site VPN Tunnel

UniFi Controller

Introducing the new UniFi Controller software featuring a refreshed UI and support for the next generation of UniFi devices.

Improved User Experience

Redesigned to be more intuitive and easier to navigate, the new UI raises the bar for enterprise network management efficiency. Important network details are logically organized for a simplified, yet powerful, interface.

Packed with Features

Use the UniFi Controller to provision thousands of UniFi APs and UniFi Security Gateways, map out networks, quickly manage system traffic, and provision additional UniFi devices.

Network Overview

A comprehensive overview of your Network Health is readily available in the new dashboard. Monitor your network's vitals and make on-the-fly adjustments as needed.

Detailed Analytics

Use the configurable reporting and analytics to monitor large user groups and expedite troubleshooting. Advanced search and sorting capabilities make network management more efficient.

Multi-Site Management

A single UniFi Controller running in the cloud can manage multiple sites: multiple, distributed deployments and multi-tenancy for managed service providers. Each site is logically separated and has its own configuration, maps, statistics, guest portal, and administrator read/write and read-only accounts.

LAN/WLAN Groups

The UniFi Controller can manage flexible configurations of large deployments. Create multiple LAN and WLAN groups and assign them to the respective UniFi devices.



Dashboard

UniFi provides a visual representation of your network's status and delivers basic information about each network segment.



Maps

Upload a map of your location(s) or use Google Maps to represent the areas where your UniFi devices are located. Starting with v5.6.x, you can also use the predictive map feature to get a preview of coverage, so you can help avoid dead spots.

The Devices screen displays a list of UniFi devices discovered by the UniFi Controller. The table has columns for Device Name, IP Address, Status, Model, Version, and Actions. The devices are listed in a table with alternating light blue and white rows. The table includes a search bar and a 'Filter' button. The table lists various UniFi devices, including UniFi APs, UniFi Proxies, and UniFi Security Gateways.

Device Configuration

The *Devices* screen displays a list of UniFi devices discovered by the UniFi Controller. You can access each managed device for device details and configuration.

UniFi® SECURITY GATEWAY PRO

Model: USG-PRO-4

The USG-PRO-4 offers optional SFP ports for fiber connectivity to support backhaul applications.

- (2) 10/100/1000 RJ45 LAN Ports
- (2) 1 Gbps RJ45/SFP Combination WAN Ports*
- (1) RJ45 Serial Console Port
- Rack-Mounting Capability
- Layer 3 Forwarding Performance
- Packet Size of 64 Bytes: 2,400,000 pps
- Packet Size of 512 Bytes or Larger: 4 Gbps (Line Rate)

* The USG-PRO-4 WAN port, as a result of being a combination SFP/GigE port, is a pure 1 Gbps port – it is incapable of both 10 Mbps and 100 Mbps FDX/HDX settings.



Front Panel



Back Panel

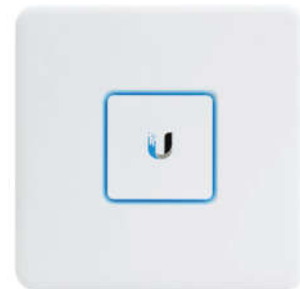
UniFi® SECURITY GATEWAY

Model: USG

The USG features a compact form factor and fanless operation for discreet integration.

- (3) 10/100/1000 RJ45 Ports*
- (1) RJ45 Serial Console Port
- Quiet, Fanless Operation
- Wall-Mounting Capability
- Layer 3 Forwarding Performance
- Packet Size of 64 Bytes: 1,000,000 pps
- Packet Size of 512 Bytes or Larger: 3 Gbps (Line Rate)

* VOIP port is available for port remapping in UniFi v5.



Top Panel



Front Panel

Specifications

| UniFi USG-PRO-4 | |
|----------------------------------|---|
| Dimensions | 484 x 44 x 164 mm (19.06 x 1.73 x 6.46") |
| Weight | 2.3 kg (5.07 lb) |
| Max. Power Consumption | 40W |
| Power Supply | Internal AC/DC Power Adapter, 60W (24V, 2.5A) |
| Power Input | 110 - 240VAC |
| LEDs | Status |
| System | Speed/Link/Activity |
| Data Ports | |
| Networking Interfaces | |
| Serial Console Port | (1) RJ45 Serial Port |
| Data Ports | (2) 10/100/1000 RJ45 LAN Ports (2) 1 Gbps RJ45/SFP Combination WAN Ports |
| Layer 3 Forwarding Performance | |
| Packet Size: 64 Bytes | 2,400,000 pps |
| Packet Size: 512 Bytes or Larger | 4 Gbps (Line Rate) |
| Processor | Dual-Core 1 GHz, MIPS64 with Hardware Acceleration for Packet Processing |
| System Memory | 2 GB DDR3 RAM |
| On-Board Flash Storage | 4 GB |
| Certifications | CE, FCC, IC |
| Rackmount | Yes |
| Operating Temperature | -10 to 45° C (14 to 113° F) |
| Operating Humidity | 10 to 90% Noncondensing |



Specifications

| UniFi USG | |
|----------------------------------|--|
| Dimensions | 135 x 135 x 28.3 mm (5.32 x 5.32 x 1.11") |
| Weight | 366 g (12.9 oz) |
| Max. Power Consumption | 7W |
| Power Supply | 12VDC, 1A Power Adapter (Included) |
| Power Input | 9 to 24VDC, Supported Voltage Range |
| LEDs | Status |
| System | Power |
| Serial Console Port | Speed/Link/Activity |
| Data Ports | |
| Networking Interfaces | |
| Serial Console Port | (1) RJ45 Serial Port |
| Data Ports | (3) 10/100/1000 Ethernet Ports* |
| Layer 3 Forwarding Performance | |
| Packet Size: 64 Bytes | 1,000,000 pps |
| Packet Size: 512 Bytes or Larger | 3 Gbps (Line Rate) |
| Processor | Dual-Core 500 MHz, MIPS64 with Hardware Acceleration for Packet Processing |
| System Memory | 512 MB DDR2 RAM |
| On-Board Flash Storage | 2 GB |
| Certifications | CE, FCC, IC |
| Wall-Mountable | Yes |
| Operating Temperature | -10 to 45° C (14 to 113° F) |
| Operating Humidity | 10 to 90% Noncondensing |

* VOIP port is available for port remapping in UniFi v5.



Specifications are subject to change. Ubiquiti products are sold with a limited warranty described at: www.ubnt.com/support/warranty
 ©2014-2017 Ubiquiti Networks, Inc. All rights reserved. Ubiquiti, Ubiquiti Networks, the Ubiquiti U logo, the Ubiquiti beam logo, and UniFi are trademarks or registered trademarks of Ubiquiti Networks, Inc. in the United States and in other countries. All other trademarks are the property of their respective owners.